

Eva lenses for Cree's MC-E series of LEDs



- Specially designed for Cree's MC-E series of LEDs.
- Special care taken to make a uniform white or warm white illumination. Lenses work well with other colors, too.
- Lens material optical grade PMMA. Allows use of high current and temperature conditions
- Best available optical efficiency, up to 90%.

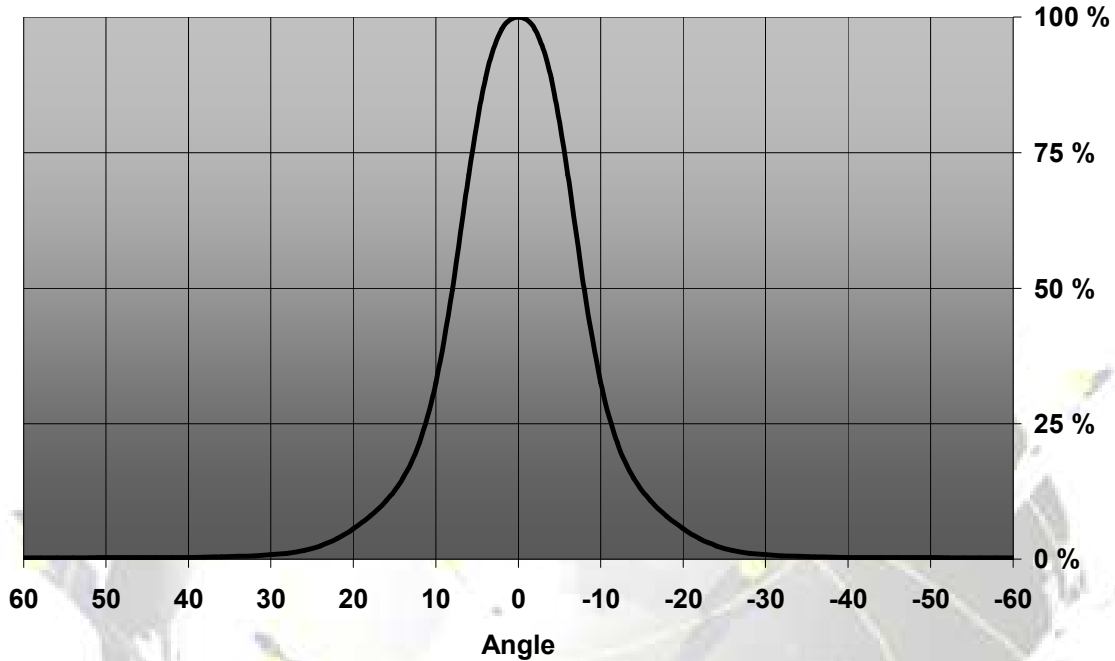
LENS TYPES

NAME	ORDERING CODE	FWHM Angle
Eva-D	Eva (n. C10684)	±8°
Eva-M	Eva (n. C10685)	±11°
Eva-W	Eva (n. C10686)	±18.2°

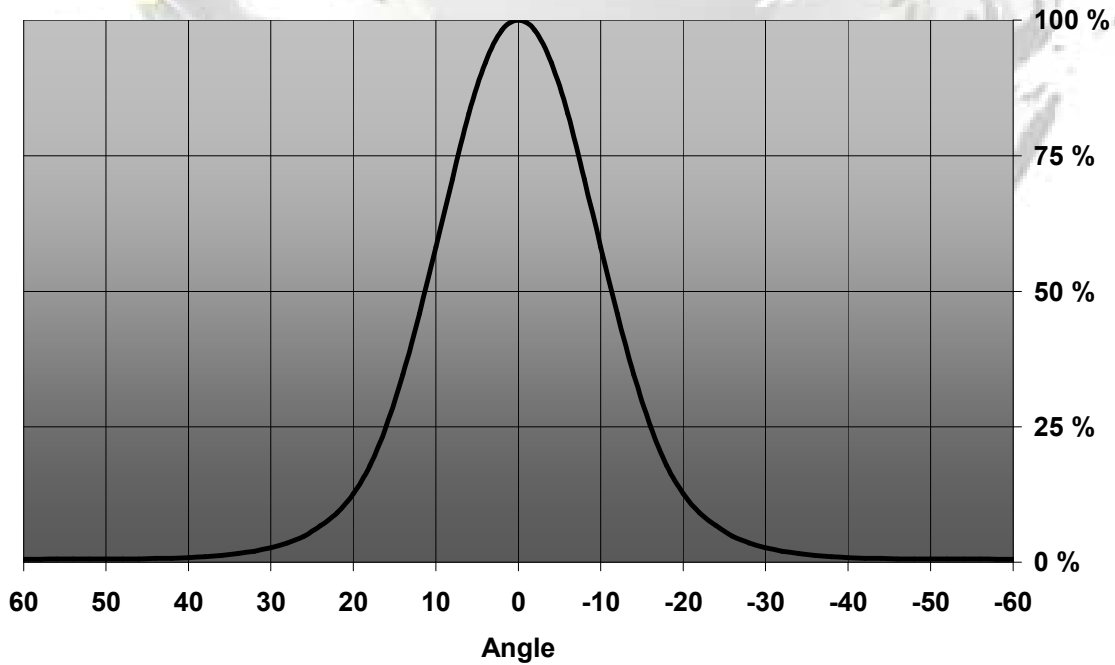
© Ledil Oy – PRELIMINARY - Subject to change without prior notice

MEASUREMENT DATA

Relative Intensity of EVA-D

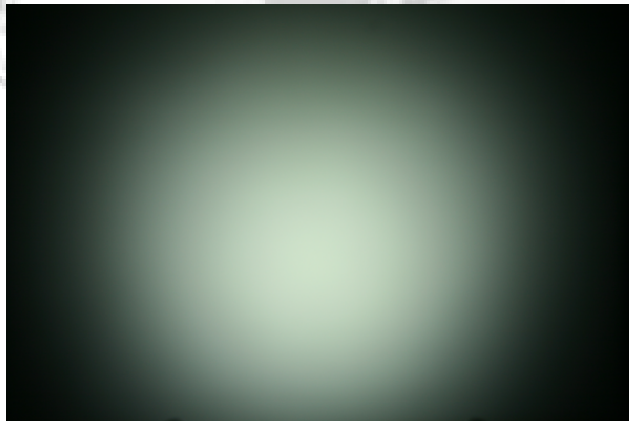
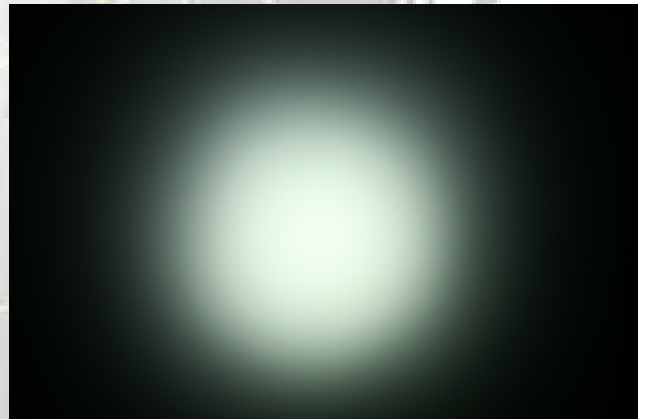
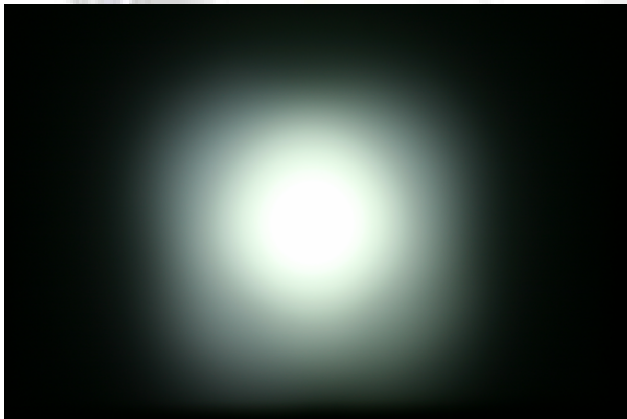
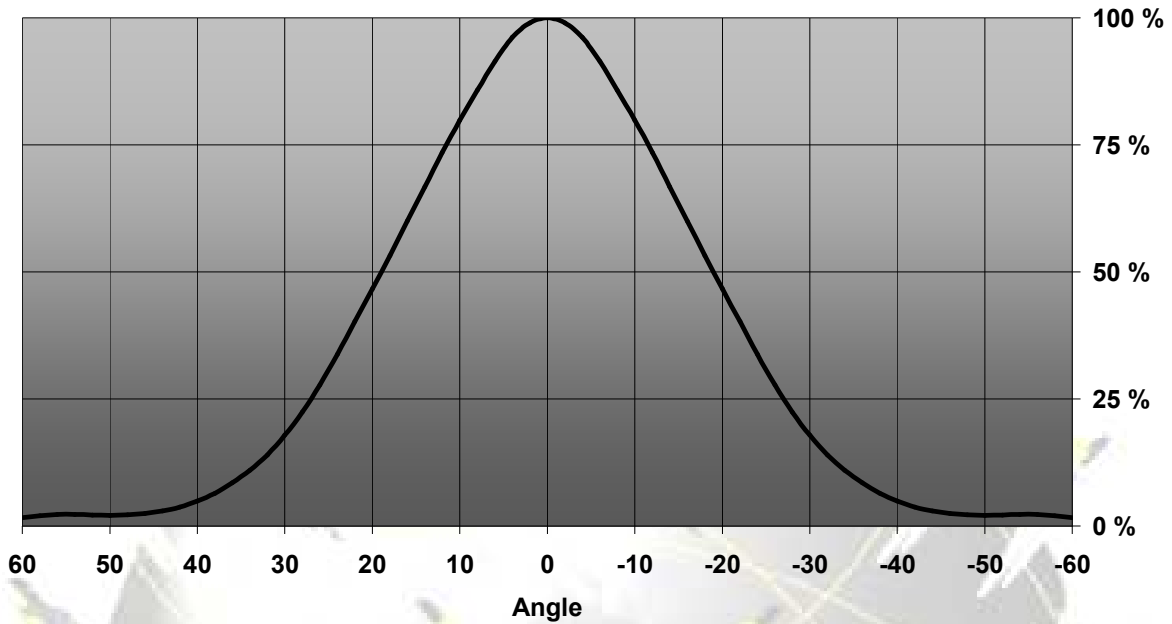


Relative Intensity of EVA-M



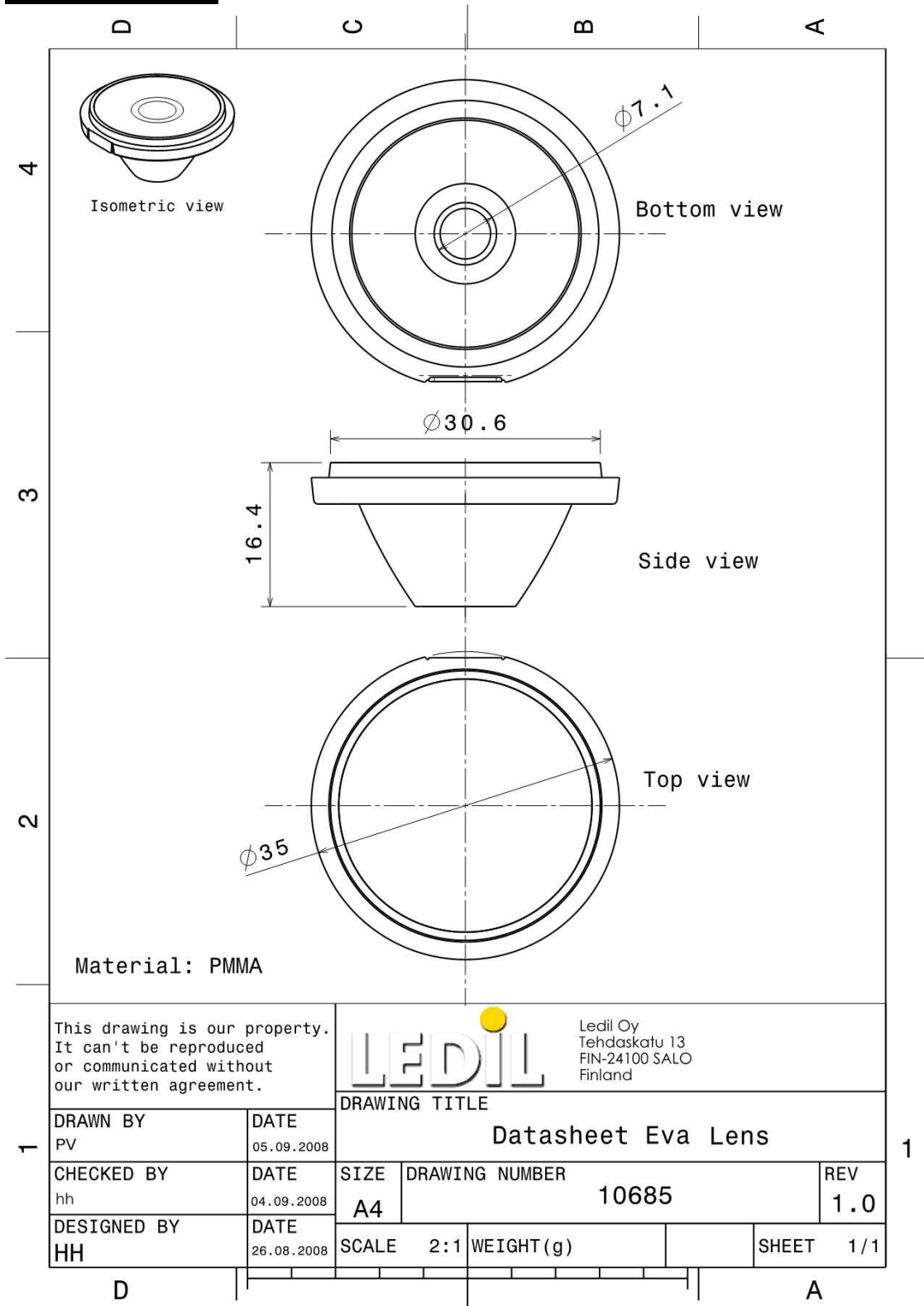
© Ledil Oy – PRELIMINARY - Subject to change without prior notice

Relative Intensity of EVA-W



© Ledil Oy – PRELIMINARY - Subject to change without prior notice

DRAWINGS



© Ledil Oy - PRELIMINARY - Subject to change without prior notice