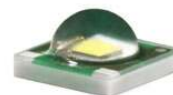


TINA-TAPE lenses for CREE XP-E LEDs



- Designed & optimized for Cree's XP-E series of LEDs
- Lens material optical grade PMMA with high UV and temperature resistance (105°C/220°F). Allows use of high current and temperature conditions
- Best available optical efficiency, over 90%, with an extremely good cutoff of light
- Fastening to heat sink with a PU foam adhesive tape of automotive grade (included)
- Please check fastening details from this link:
(http://www.ledil.com/datasheets/DataSheet_TAPE.pdf)
- Compact dimensions 16.1 x 10.1 mm.

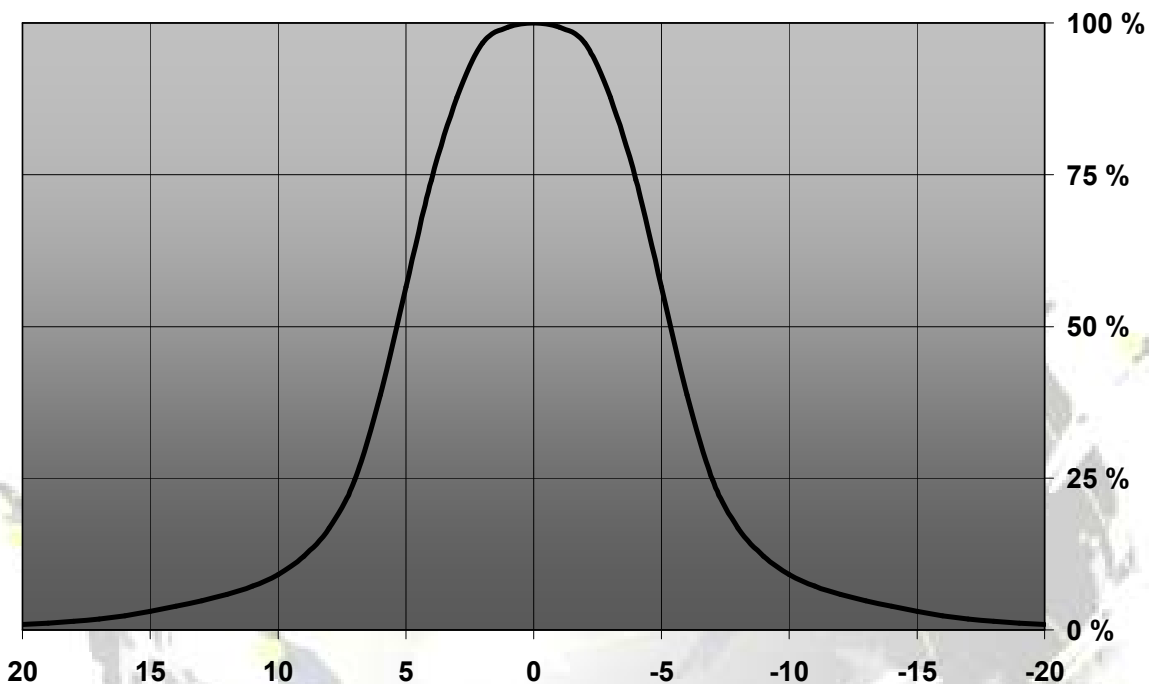
LENS TYPES

NAME	ORDERING CODE	FWHM Angle
TINA-XP REAL SPOT	FA10887_Tina-XP-RS	±5.5
TINA-XP DIFFUSER	FA10644_Tina-XP-D	±6.5°
TINA-XP MEDIUM	FA10645_Tina-XP-M	±15°
TINA-XP WIDE	FA10838_Tina-XP-W	±20°
TINA-XP WW	FA11019_Tina-XP-WW	±21°
TINA-XP OVAL	FA11200_Tina-XP-O	±17°x ±7°

MEASUREMENTS

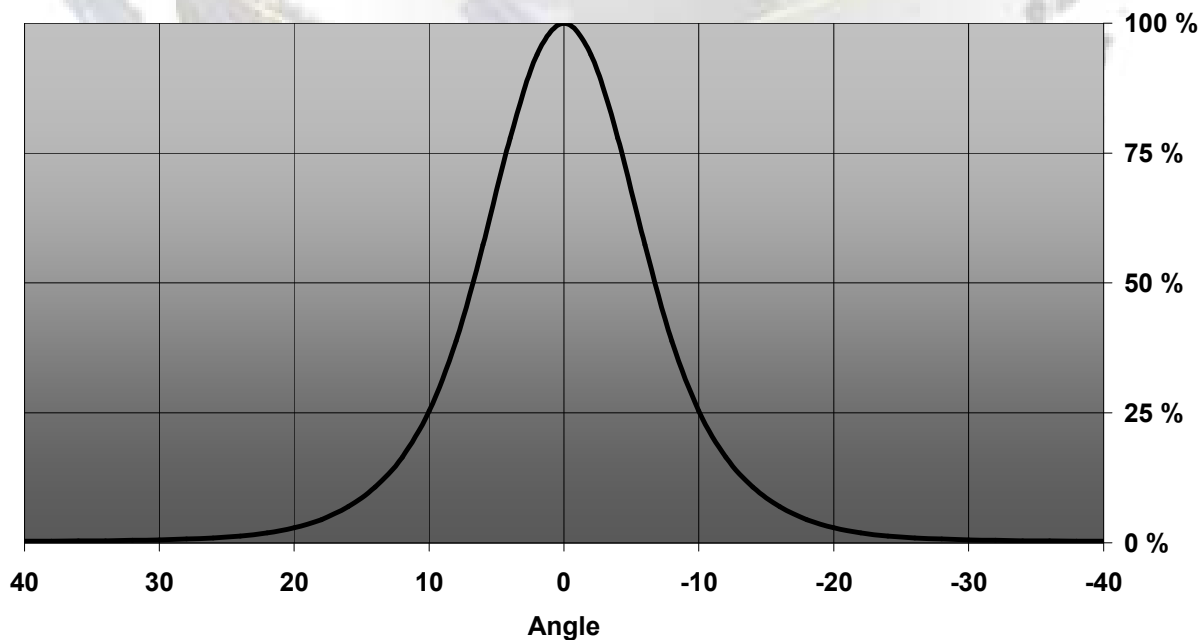
TINA-XP-RS

Relative Intensity of FA10887-Tina-XP-RS



TINA-XP-D

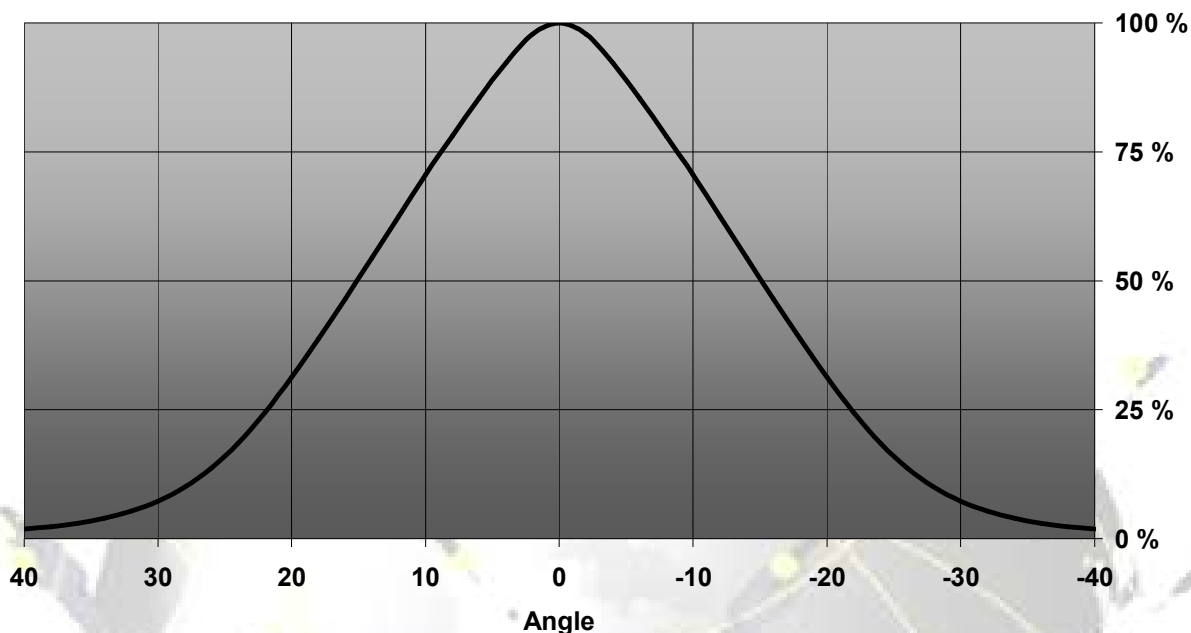
Relative Intensity of Tina-XP-D



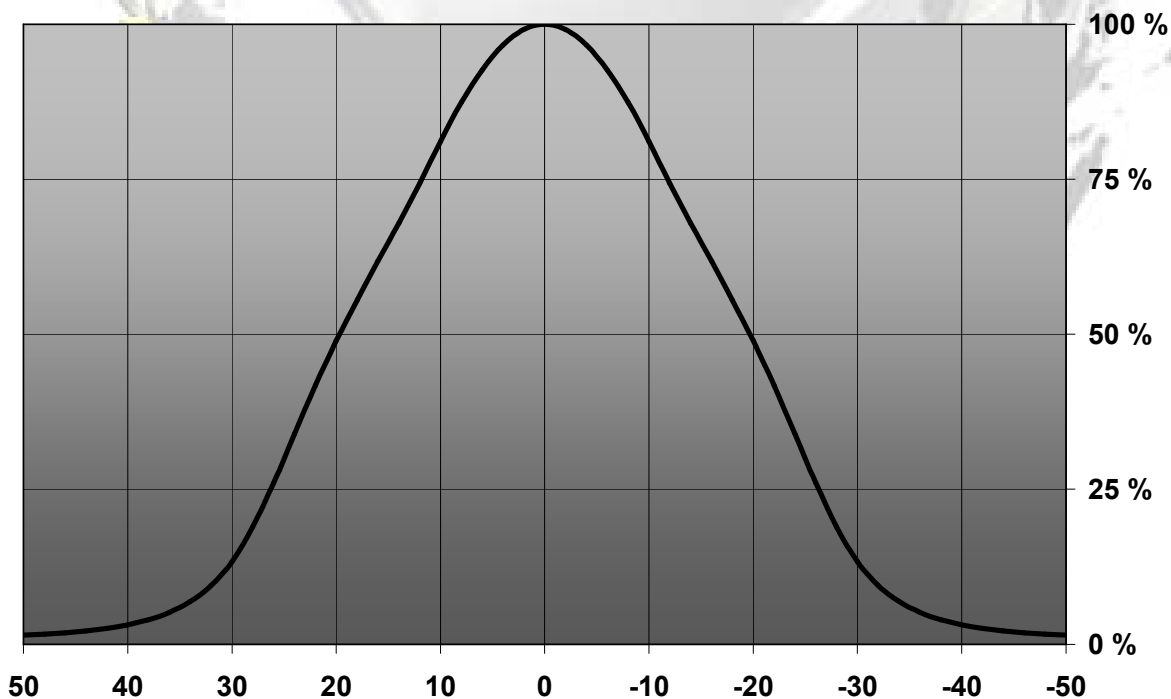
© Ledil Oy – PRELIMINARY - Subject to change without prior notice

TINA-XP-M

Relative Intensity of Tina-XP-M

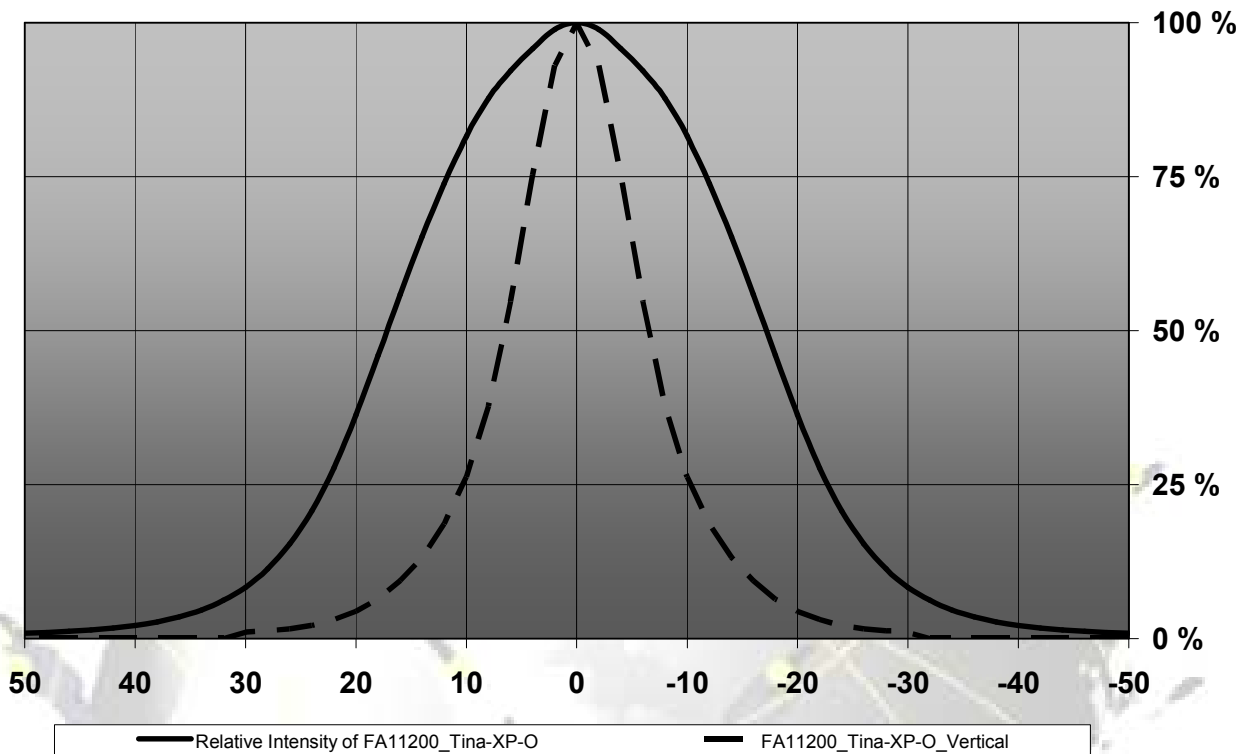


Relative Intensity of FA10838_Tina-XP-W

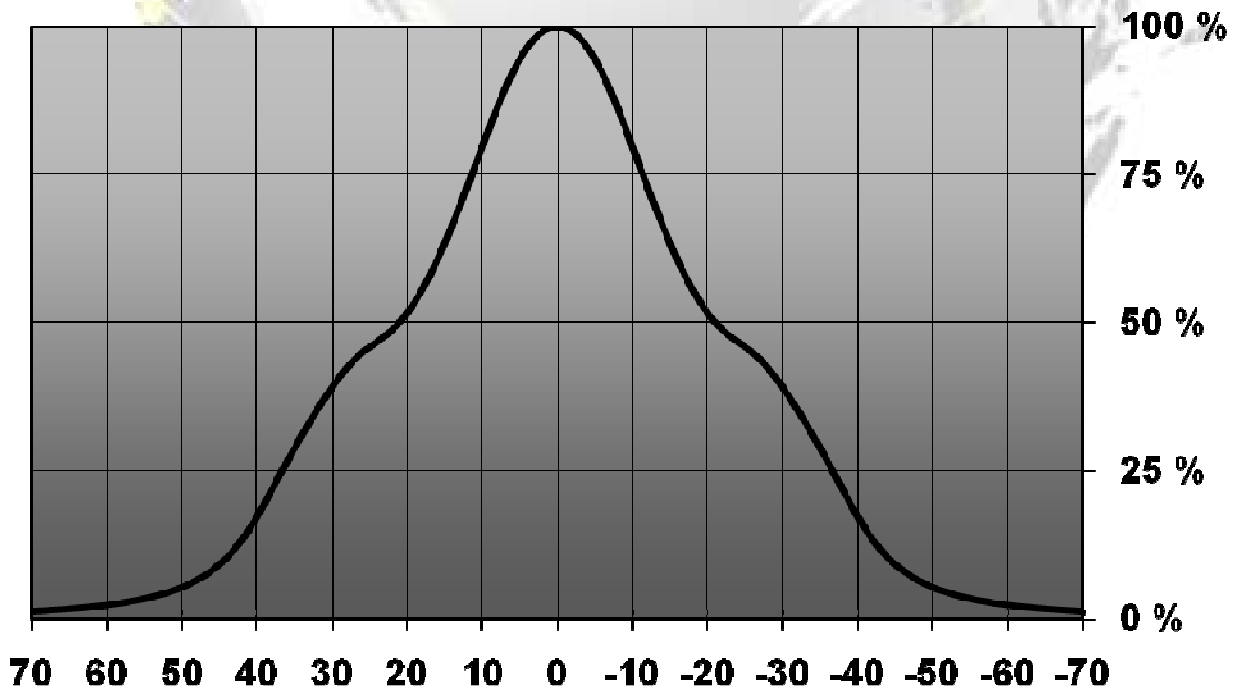


© Ledil Oy – PRELIMINARY - Subject to change without prior notice

Relative Intensity of FA11200_Tina-XP-O

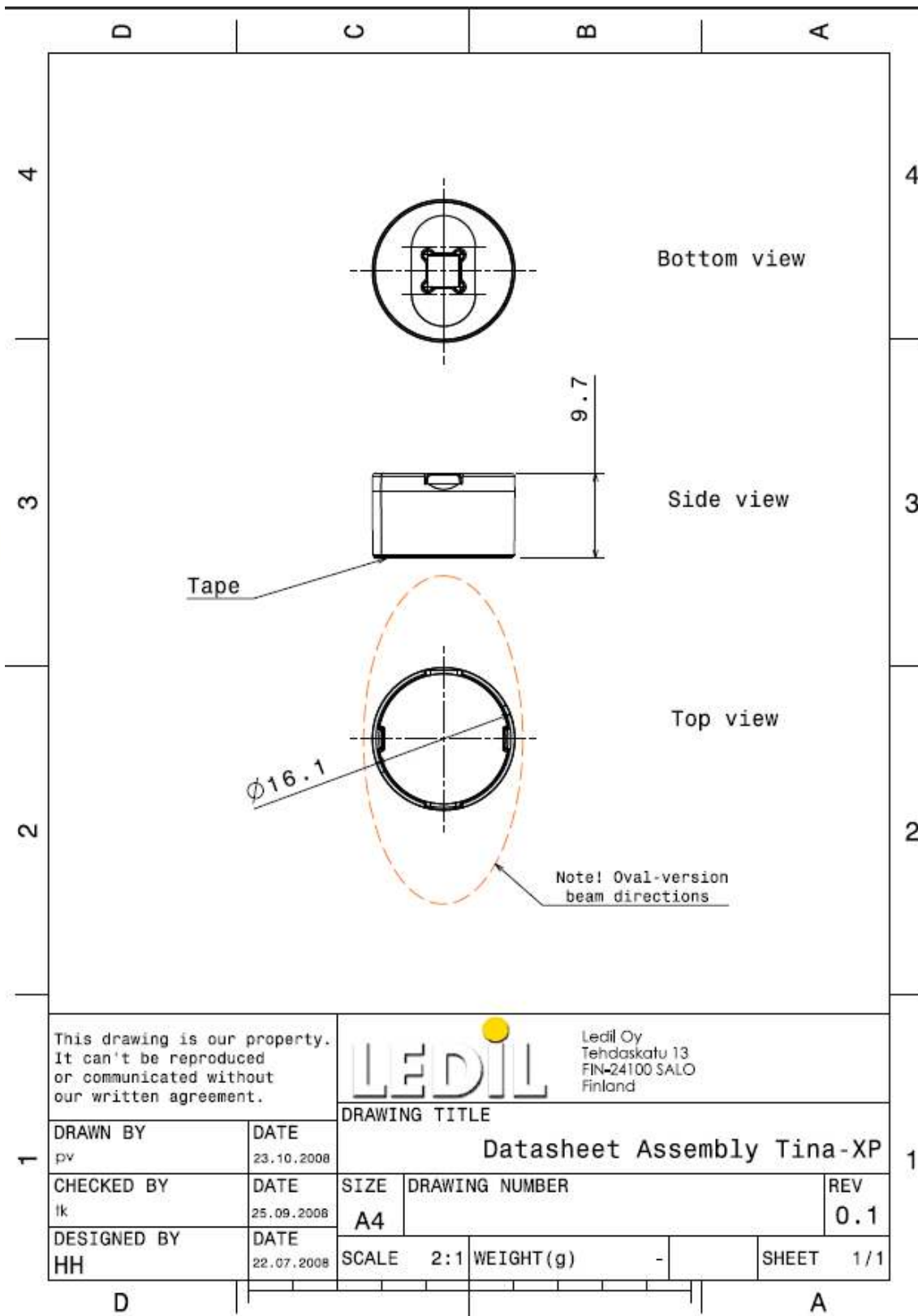


Relative Intensity of FA11019_Tina-WW-XP



© Ledil Oy – PRELIMINARY - Subject to change without prior notice

DRAWINGS



© Ledil Oy - PRELIMINARY - Subject to change without prior notice